

FIELD REPLACEABLE UNIT DOCUMENTATION

Satellite™

2230/2250 Series

BATTERY PACK REMOVAL



1. Turn the computer upside down as shown.
2. Slide the **battery release lever** in the direction of the arrow.
3. Slide the **battery assembly** towards you and lift it out.

OPTIONAL PCMCIA CARD REMOVAL



1. Pull out the **eject button** of the PC card to be removed.
2. Press the **eject button** and remove the **PC card**.

NOTE: Before removing any PCMCIA device, make sure it is "STOPPED" in the PC Card Manager.

HDD REMOVAL



1. Turn the computer upside down.
2. Remove **one M2.5x8 black screw** securing **HDD cover** and pull out the cover.



3. Slide the **HDD** forward to disconnect from P39 on the system board.
4. Lift out the **HDD**.

TOSHIBA

Tough Enough for Today's World.

FIELD REPLACEABLE UNIT DOCUMENTATION

Satellite™

2230/2250 Series

KEYBOARD REMOVAL



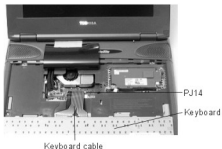
1. Open the display panel.
2. Remove the **keyboard holder** at the top of the keyboard.

KEYBOARD REMOVAL



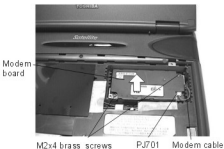
3. Remove **two M2x4 brass screws** securing the keyboard.
4. Lift out the **keyboard** and lay it face down on the palm rest. Be careful not to apply pressure to the keyboard cable.

KEYBOARD REMOVAL



5. Disconnect the **keyboard cable** from **PJ14** on the system board and remove the **keyboard**.

MODEM REMOVAL



1. Remove **two M2x4 brass screws** securing the modem board.
2. Lift up the front side of the **modem board** and remove it from the system board.
3. Disconnect the **modem cable** from **PJ701** on the modem.

TOSHIBA

Tough Enough for Today's World.

FIELD REPLACEABLE UNIT DOCUMENTATION

Satellite™

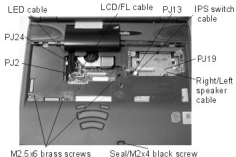
2230/2250 Series

EXPANSION MEMORY REMOVAL



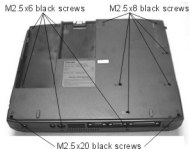
1. Gently push the **memory clips** outward and pull the **memory module** out of the connector on a 30 degree angle.

TOP COVER REMOVAL



2. Turn the computer right side up and open the display panel.
3. Disconnect the following five cables:
 - **LCD/FL cable** from **PJ2**
 - **IPS switch cable** from **PJ13**
 - **Left and Right speaker cable** from **PJ19**
 - **LED cable** from **PJ24**
4. Remove the **seal** covering the top screw and remove **one M2x4 black screw** and **three M2.5x6 brass screws** securing top cover.

TOP COVER REMOVAL



1. Turn the computer upside down and remove the following thirteen screws:
 - **2 M2.5x20 black screws**
 - **6 M2.5x8 black screws**
 - **5 M2.5x6 black screws** from battery slot and back of the computer



5. Lift up the back side of the top cover and display assembly and pass the **modem jack cable** through the opening in the upper cover.
- CAUTION:** When installing the top cover make sure that the modem jack cable is routed properly through the opening of the top cover.

TOSHIBA

Tough Enough for Today's World.

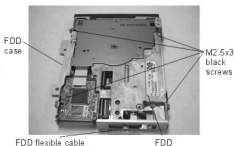
FIELD REPLACEABLE UNIT DOCUMENTATION

Satellite™ 2230/2250 Series

FDD REMOVAL



1. Disconnect the **FDD flexible cable** from **PJ7** on the system board.
2. Remove the **FDD**.



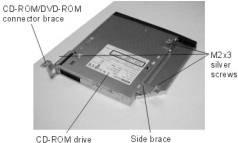
3. Remove **four M2.5x6 black screws** securing the FDD to the FDD case and separate the **FDD** from its case.
4. Disconnect the **FDD flexible cable** from the FDD.

CD-ROM/DVD ROM DRIVE REMOVAL



CD/DVD-ROM drive PJ10

1. Slide the **CD-ROM/DVD-ROM drive** in the direction of the arrow and lift it out.



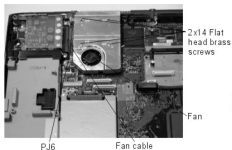
2. Remove **two M2x3 silver screws** securing the left and right side braces on the CD-ROM/DVD-ROM drive.

FIELD REPLACEABLE UNIT DOCUMENTATION

Satellite™

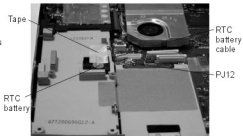
2230/2250 Series

COOLING FAN REMOVAL



1. Remove **four flat head brass screws** securing the cooling fan.
2. Remove the **cooling fan** and disconnect the **fan cable** from **PJ6** on the system board.

RTC BATTERY REMOVAL

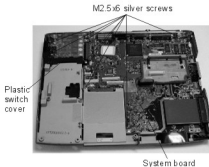


1. Remove the **tape** securing the **RTC battery**.
2. Disconnect the **RTC battery cable** from **PJ12** on the system board.
3. Lift out the **RTC battery**.

SYSTEM BOARD REMOVAL



1. Release the latches securing the **modem jack** and remove it.
2. Release the latches securing the **audio jack panel** and remove it.



3. Remove **eight M2.5x6 silver screws** securing the system board and power supply board.
4. Lift out the **plastic switch cover**.

TOSHIBA

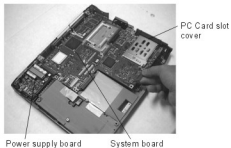
Tough Enough for Today's World.

FIELD REPLACEABLE UNIT DOCUMENTATION

Satellite™

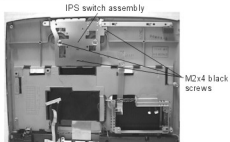
2230/2250 Series

SYSTEM BOARD REMOVAL



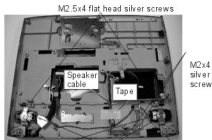
5. Lift up the **system board and power supply board** from the front side and pull them out. Ensure that the eject button of the PC Card slot is not caught on the bottom cover.
6. Lift out the **PC Card Slot cover**.

MEMBRANE SWITCH REMOVAL



1. Remove **three M2x4 black screws** securing the IPS switch assembly.
2. Lift out the **IPS switch assembly**.

SPEAKERS REMOVAL



1. Remove **two M2x4 flat head silver screws** securing each speaker bracket and lift out the two **brackets**.
2. Remove the **tape** securing the **speaker cables**.
3. Remove **one M2x4 silver screw** securing the cover sensor spring.
4. Remove **one M2x4 silver screw** securing the **cover sensor PCB** and lift out the speaker assembly.

TOSHIBA

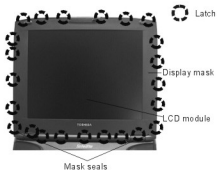
Tough Enough for Today's World.

FIELD REPLACEABLE UNIT DOCUMENTATION

Satellite™

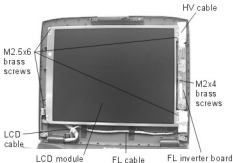
2230/2250 Series

13.3 TFT DISPLAY MASK REMOVAL



1. Remove **two mask seals** at the bottom corners of the display assembly.
2. Remove **two M2.5x6 brass screws**.
3. There are **23 latches** securing the **display mask**. Carefully insert your fingers between the **display mask** and the **LCD module** and pry open the latches starting from the **top six latches**, to the **five latches on the right and left sides**, ending with the **six bottom latches**.

FL INVERTER AND 13.3 TFT LCD REMOVAL



1. Remove all tapes and **one M2x4 brass screw** securing FL inverter board.
2. Carefully lift up the **FL inverter board** and disconnect the **FL inverter cable** from **CN1** and the **HV cable** from **CN2**.
3. Remove **four M2.5x6 brass screws** securing the LCD module.
4. Carefully rotate the **LCD module** from right to left of the LCD cover.
5. Disconnect the **LCD cable** from the LCD module and remove the **LCD module** from the computer.

TOSHIBA

Tough Enough for Today's World.